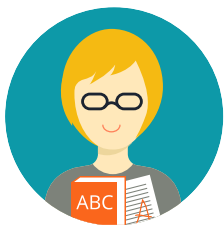


# CAREERS DAY OUT

2017



EXHIBITOR INFORMATION



# CAREERS DAY OUT

2017

## EXHIBITOR INFORMATION

Careers Day Out is one of the largest education, training and employment expos in Northern Victoria, with almost 1,200 students attending in 2016.

Our aim is to provide regional students currently undertaking Year 10, with the opportunity to discover the diverse range of careers, education, pathways and employment available across the region.

Now in its 19th consecutive year, Careers Day Out provides students with the opportunity to explore and interact with exhibitors, participate in career orientated activities and hear first hand from those in the industry through industry focused presentations.

Careers Day Out also incorporates the Nyuwandan Gatjabak Indigenous Careers Day to provide more opportunities for Indigenous and Torres Strait Islander students to engage and connect with local training providers, employers and industry groups.

Students spend over two hours visiting various exhibitors and attending industry panel sessions to learn more about working in industries they are interested in and hearing the career journeys of local professionals.

Exhibitors include TAFE's, Universities, other training providers, industry associations, local industry, employers, employment and support agencies.

Active participation by students, interactive displays and meaningful interaction between students and presenters is encouraged through competitions, give-aways, activities and worksheets to ensure the day is engaging and worthwhile for everyone.

### 2017 Details

**Time:** Thursday 27 April 2017

**Venue:** McIntosh Centre, Shepparton Showgrounds

#### Opening Times

Session 1: 9:30am - 12pm      Session 2: 12pm - 2:30pm

*Please note this event is not open to the public*

#### Enquiries

Please contact the Event Manager Emily Hamilton

Phone: (03) 5833 2530      Email: [events@gotafe.vic.edu.au](mailto:events@gotafe.vic.edu.au)

Please contact Misti Gow from KESO for more information about the Nyuwandan Gatjabak Indigenous partnership on 0477 326 757.



## Benefits of Involvement



## Community Contribution

- Young people become better informed about the full range of careers, pathways, local education and employment opportunities
- Young people are given opportunities to make connections, build relationships and potentially build their knowledge around the skills and qualifications required to work in local industries
- Encourage young people to remain in our local region to pursue employment and education opportunities

## Exhibitor Participation

Exhibitors are encouraged to actively engage with students by providing activities and stalls that engage students in discussion about their goals and aspirations.

- Promotional items for students - only to be given out once a student has accomplished a task or engaged in a relevant conversation
- Interesting table displays and signage
- Costumes or props - exhibitors might consider dressing up in costume for their stall
- Fun and interactive displays

For student challenge ideas, please contact School Career Advisors Fay Scadden or Mary-Ann Linehan.

**Fay Scadden** [scadden.fay.l@edumail.vic.gov.au](mailto:scadden.fay.l@edumail.vic.gov.au)

**Mary-Ann Linehan**

[linehan.mary-ann.m@edumail.vic.gov.au](mailto:linehan.mary-ann.m@edumail.vic.gov.au)

# PANEL SESSIONS

TOPIC	WHERE	SESSION 1	SESSION 2
Defence & Emergency Services	Marquee #1	10.00am - 10.30am	12.30pm - 1.00pm
Creative Arts & Media	Marquee #2	10.00am - 10.30am	12.30pm - 1.00pm
Helping People	Marquee #3	10.00am - 10.30am	12.30pm - 1.00pm
The Professionals	Marquee #4	10.00am - 10.30am	12.30pm - 1.00pm
Food, Fibre & Animals	Marquee #5	10.00am - 10.30am	12.30pm - 1.00pm
Life @ Uni - What's Uni Like?	Marquee #6	10.00am - 10.30am	12.30pm - 1.00pm
Trades & Apprentices	Marquee #1	10.45am - 11.15am	1.15pm - 1.45pm
Hair & Beauty	Marquee #2	10.45am - 11.15am	1.15pm - 1.45pm
Health	Marquee #3	10.45am - 11.15am	1.15pm - 1.45pm
Events, Hospitality & Tourism	Marquee #4	10.45am - 11.15am	1.15pm - 1.45pm
Sport & Recreation	Marquee #5	10.45am - 11.15am	1.15pm - 1.45pm
Life @ Uni - Exploring Pathways	Marquee #6	10.45am - 11.15am	1.15pm - 1.45pm



## OPENING TIMES

**Session 1: 9:30am - 11.30am**  
**Schools from Shepparton region**

**Session 2: 12.00pm - 2:30pm**  
**Schools from outlying regions**



# GENERAL INFORMATION

## ACCESS

Exhibitors will have access to their site between 2pm - 5pm on Wednesday 26 April and from 7am on Thursday 27 April 2017. All sites must be set up by 9:00am on the day.

## BUMP OUT

Exhibitors are expected to stay for the duration of the student attendance at the event (9:00am – 2:30pm). Exhibitors will have access between 9am and 11am on Friday 28 April, however it is strongly encouraged to bump out immediately following the event.

## CATERING

Complimentary tea and coffee facilities will be available for exhibitors in a designated break away space. Lunch packs be available to purchase, prepared by GOTAFE Hospitality students.

## ENTRY

Entry and parking details to the McIntosh Centre will be provided in your confirmation pack.

## EQUIPMENT

The Careers Day Out exhibitor fee includes one trestle table and one chair which will be on the site when Exhibitors arrive. It is requested that Exhibitors bring their own table cloth.

## OHS

All Exhibitors are required to complete an Exhibitor Indemnity and OHS Checklist and Indemnity Form and submit the completed Form to the Careers Day Out Information Desk upon arrival.

## PARKING

Exhibitors may drop off at the rear door of the McIntosh Centre but then must move their vehicle as directed by the parking attendant.

## POWER

Due to limited power available only sites to have access to power will be those that request power when registering. Exhibitors are required to provide their own extension lead and power boards, which must display current Test and Tag certification.

## PRESENTATIONS

Please discuss any presentation requirements with the Event Manager. We will do our best to accommodate your request.

## REGISTRATION

Exhibitors are required to register at the Careers Day Out Information Desk on arrival.

## RUBBISH

Exhibitors are responsible for disposal of their own rubbish. No rubbish should be left on site. Please dispose of all non-recyclable rubbish in bins provided.

## SITES

Exhibitor sites are available both inside and outside the McIntosh Centre, each measuring 3 x 3 metres (unless a specific size has been requested at registration). Site numbers will be allocated in the week prior to Careers Day Out and will be sent via email to the contact person nominated on the Exhibitor Registration Form.

## STICKERS

While relevant and engaging giveaways are encouraged, Exhibitors are NOT permitted to give away stickers.

## VALUABLES

Please do not leave valuable items on site overnight or during the day. The Event Manager takes no responsibility for any loss of items for the duration of the event.



# PACKAGES

Features	Exhibitor \$100*	Bronze \$250	Silver \$500	Gold \$750
Your pull up banner prominently displayed at entrance to event				✓
Acknowledgement as sponsor on all event material and communications			✓	✓
Your logo on CDO website with link to your own website				✓
Mention on the website as a supporter of the event		✓	✓	
3m x 3m booth space	✓	✓		
Prime 3m x 3m booth space			✓	
Prime 6m x 3m booth space				✓
Mention in program as a supporter of CDO		✓	✓	✓
Logo included in pre event print advertising				✓
Mention in pre-event print advertising			✓	
Opportunity to be a speaker on a Panel			✓	✓
Access to sponsor / exhibitor refreshment area	✓	✓	✓	✓
Verbal acknowledgement during the event		✓	✓	✓

\*Please contact the Event Manager about exhibitor fees if you are a not-for-profit organisation

2016 Sponsors:

**Gold Sponsors:** GOTAFE, Goulburn-Murray Water, Greater Shepparton City Council, GV Health, La Trobe University, McDonald's, Shepparton News, Skills & Jobs Centre, The Adviser, The University of Melbourne, Defence Force Recruiting and Cool Heads Young Driver Program.

Silver Sponsors: CFA, GMLLEN, KFC, Master Builders Association of Victoria, Monash University, RACV.

Bronze Sponsors: Apprenticeships Matter, Bendigo TAFE, Collarts, Commonwealth Bank, JMC Academy, MI Fellowship, Open Universities, SEDA, The Outdoor Education Group, William Angliss.

Please register at [www.careersdayout.com.au](http://www.careersdayout.com.au)